

Product no **AS19 4331****Wheat gliadin****Product information**

| | |
|------------------|--|
| Immunogen | Wheat Gliadin (Native Protein) |
| Host | Rabbit |
| Clonality | Polyclonal |
| Purity | >95%, Protein G purified to a total immunoglobulin G fraction. |
| Format | Liquid |
| Quantity | 50 µg |
| Storage | Store at -20°C or -80°C, avoid repeated freeze-thaw cycles. Make aliquots to avoid repeated freeze-thaw cycles. Please remember to spin the tubes briefly prior to opening them to avoid any losses that might occur from material adhering to the cap or sides of the tube. |

Additional information | Product contains a preservative: 0,03% Proclin 300 and 50% Glycerol, 10 mM PBS, pH 7,4

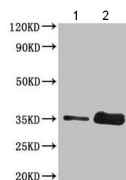
Application information

Recommended dilution | 1 : 1000-1: 5000 (WB)

Expected | apparent MW | 35 | 35 kDa

Confirmed reactivity | wheat gliadin

Not reactive in | No confirmed exceptions from predicted reactivity are currently known

Application example

2 and 10 µg of wheat flour were loaded/well and separated on 10 % SDS-PAGE and blotted 1h to PVDF using semi-dry transfer. Blot was blocked with 5 % milk for 2h/RT with agitation. Blot was incubated in the primary antibody at 2 µg/ml for 1h/RT with agitation in PBS-T. The antibody solution was decanted and the blot was rinsed briefly twice, then washed 4x in PBS-T at RT with agitation. Blot was incubated in matching secondary antibody (anti-rabbit IgG horse radish peroxidase conjugated) diluted to 1:50 000 in for 1h/RT with agitation. The blot was washed as above and developed with chemiluminescent detection reagent according to manufacture's instructions.