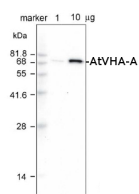


Product no **AS09 467****V-ATPase, A | Vacuolar H<sup>+</sup>-ATPase subunit A (ammonium sulfate purified IgG)****Product information****Immunogen** | KLH-conjugated synthetic peptide derived from *Arabidopsis thaliana* V-ATPase subunit A, [O23654](#), [At1g78900](#)**Host** | Rabbit**Clonality** | Polyclonal**Purity** | Ammonium sulfate purified, total IgG.**Format** | Lyophilized**Quantity** | 100 µl**Reconstitution** | For reconstitution add 100 µl of sterile water.**Storage** | Store lyophilized/reconstituted at -20°C; once reconstituted make aliquots to avoid repeated freeze-thaw cycles. Please remember to spin the tubes briefly prior to opening them to avoid any losses that might occur from material adhering to the cap or sides of the tube.**Additional information** | 0.1 % sodium azide is added as preservative. For antibody re-suspending information check the tube label.

Antibodies will detect target protein in a few µg of a crude preparation loaded per well. If purified preparations of vacuolar and plasma membranes are used, one µg load per well should be sufficient.

Protocol for isolation of plant vacuolar membranes can be found [here](#).**Application information****Recommended dilution** | 1 : 8000 (ELISA), 1 : 2000 (WB)**Expected | apparent MW** | 68.8 | 70 kDa (*Arabidopsis thaliana*)**Confirmed reactivity** | *Arabidopsis thaliana*, *Mesembryanthemum crystallinum*, *Nicotiana tabacum***Predicted reactivity** | *Chlamydomonas reinhardtii*, *Brassica napus*, *Cucumis sativus*, *Gossypium mexicanum*, *Hordeum vulgare*, *Oryza sativa*, *Ostreococcus lucimarinus*, *Phaseolus aureus*, *Populus balsamifera*, *Physcomitrium patens*, *Solanum lycopersicon*, *Triticum aestivum*, *Zea mays*  
Species of your interest not listed? [Contact us](#)**Not reactive in** | *Thermotoga neapolitana***Additional information** | Protein or membrane sample should be treated at 70°C for 10 min before loading on the gel.

Diluted antibody solution can be used 2 to 3 times within one month if it contains 0.1 % sodium azide as preservative and is stored at -20°C to -80°C.

**Selected references** | [Vera-Estrella](#) et al. (2017). Cadmium and zinc activate adaptive mechanisms in *Nicotiana tabacum* similar to those observed in metal tolerant plants. *Planta*. 2017 Apr 28. doi: 10.1007/s00425-017-2700-1.  
[Barkla](#) et al. (2016). Single-cell-type quantitative proteomic and ionomic analysis of epidermal bladder cells from the halophyte model plant *Mesembryanthemum crystallinum* to identify salt-responsive proteins. *BMC Plant Biol*. 2016 May 10;16(1):110. doi: 10.1186/s12870-016-0797-1.  
[Yoshihiro](#) et al. (2006) Immunochemical analysis of aquaporin isoforms in *Arabidopsis* suspension-cultured cells. *Cells. Biosci. Biotechnol. Biochem*. 70: 980-987.**Application example**

This product is **for research use only** (not for diagnostic or therapeutic use)

contact: [support@agrisera.com](mailto:support@agrisera.com)

Agrisera AB | Box 57 | SE-91121 Vännäs | Sweden | +46 (0)935 33 000 | [www.agrisera.com](http://www.agrisera.com)

**1 µg and 10 µg of crude membrane fraction/lane** from *Arabidopsis thaliana* were separated on 12 % **SDS-PAGE** and blotted 1h to **PVDF membrane** (40 min. at 10 V using BioRad semidry transfer). Filters were blocked 1h with 5 % low-fat **milk powder** in TBS-T (0.05% Triton X.100). Membranes were washed 5 times with TBS-T, each time in a fresh polystyrene box and probed with anti-V-ATPase subunit A antibodies (AS09 467, **1:2000**, 1h) and secondary anti-rabbit (**1:2000**, 1 h). All steps were performed in RT with agitation.