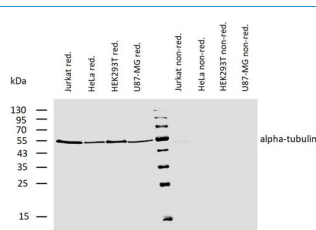


Product no **AS21 4624****Tubulin alpha chain, Biotin conjugated (clone TU-01)****Product information**

<b>Immunogen</b>	Fraction of tubulin purified from porcine brain by two cycles of polymerization - depolymerization. UniProt: <a href="#">Q71U36</a>
<b>Host</b>	Mouse
<b>Clonality</b>	Monoclonal
<b>Subclass/isotype</b>	IgG1
<b>Purity</b>	Conjugated with biotin-LC-NHS under optimum conditions and free of unconjugated biotin
<b>Format</b>	Liquid at 1 mg/ml.
<b>Quantity</b>	0.1 mg
<b>Storage</b>	Store at 2-8 °C. Do not freeze. Do not use after expiration date stamped on the label. Please remember to spin the tubes briefly prior to opening them to avoid any losses that might occur from material adhering to the cap or sides of the tube.
<b>Additional information</b>	This antibody is recognizing a defined epitope (aa 65-97) on N-terminal structural domain of alpha-tubulin 1, UniProt: <a href="#">Q71U36</a>

**Application information**

<b>Recommended dilution</b>	1-2 µg/ml (WB)
<b>Expected   apparent MW</b>	50   54 kDa
<b>Confirmed reactivity</b>	<i>Arabidopsis thaliana</i> , <i>Eisenia</i> , <i>Nicotiana tabacum</i> , <i>Paramecium</i> , <i>Saccharomyces cerevisiae</i> , human, mouse, pig, turkey
<b>Predicted reactivity</b>	Species of your interest not listed? <a href="#">Contact us</a>
<b>Selected references</b>	To be added when available, antibody released in October 2021.



Samples: lysates of various cell lines under reducing (left to MW markers) and non-reducing conditions (right to MW markers). Following SDS-PAGE, proteins were transferred to nitrocellulose membrane and incubated with 2 µg/ml of biotinylated mouse anti-alpha-tubulin monoclonal antibody followed by IRDye800-conjugated streptavidin.