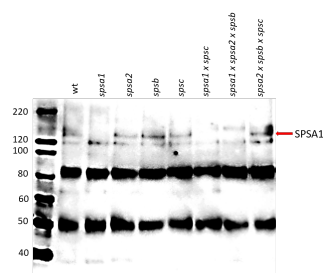


Product no **AS15 2995****SPSA1 | Sucrose phosphate synthase isoform A1****Product information**

<b>Immunogen</b>	KLH-conjugated synthetic peptide derived from <i>Arabidopsis thaliana</i> SPSA1 sequence, Uniprot: <a href="#">Q56X42</a> , TAIR: <a href="#">AT5G20280</a>
<b>Host</b>	Rabbit
<b>Clonality</b>	Polyclonal
<b>Purity</b>	Immunogen affinity purified serum in PBS pH 7.4.
<b>Format</b>	Lyophilized
<b>Quantity</b>	50 µg
<b>Reconstitution</b>	For reconstitution add 50 µl of sterile water
<b>Storage</b>	Store lyophilized/reconstituted at -20°C; once reconstituted make aliquots to avoid repeated freeze-thaw cycles. Please remember to spin the tubes briefly prior to opening them to avoid any losses that might occur from material adhering to the cap or sides of the tube.

**Application information**

<b>Expected   apparent MW</b>	117,3 kDa
<b>Confirmed reactivity</b>	<i>Arabidopsis thaliana</i>
<b>Predicted reactivity</b>	<i>Arabidopsis alpina</i> , <i>Brassica napus</i> , <i>Eutremas alsugineum</i> , <i>Glycine max</i> , <i>Glycine soja</i> Species of your interest not listed? <a href="#">Contact us</a>
<b>Not reactive in</b>	No confirmed exceptions from predicted reactivity are currently known

**Application example**

Proteins were isolated from *Arabidopsis thaliana* wild-type and SPS mutants were solubilized with 3X LB (6 M urea, 12% SDS, 30% glycerol, 100 mM DTT, 150 mM Tris pH7.0, 0.8% Comassie G-250). 12 µg of proteins were loaded into each lane and separated on 8% SDS-PAGE, and then blotted overnight onto PVDF membrane. Membranes were blocked with milk powder for 2 h and then incubated in the primary antibody solution (AS01 004, 1: 1 000) overnight, which was then decanted and the membrane was washed 3 times for 5 min in TBST. Membrane was incubated at RT for 1 hour in 1:10 000 goat anti-Rabbit secondary antibody (**AS09 602**), followed by washing steps as above. Membrane was developed for 2 min with [Agrisera ECL Bright](#) according to the manufacturer's instructions and recorded using FujiFilm CCD camera with 10 s increment time for around 5 min.