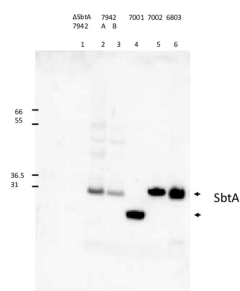


Product no **AS13 2657****SbtA | Sodium-dependent bicarbonate transporter****Product information**

<b>Immunogen</b>	KLH-conjugated synthetic peptide derived from known cyanobacterial SbtA sequences including <u>A0A0A1VVY1</u> , <u>A1XQW8</u> and others.
<b>Host</b>	Rabbit
<b>Clonality</b>	Polyclonal
<b>Purity</b>	Immunogen affinity purified serum in PBS pH 7.4.
<b>Format</b>	Lyophilized
<b>Quantity</b>	50 µg
<b>Reconstitution</b>	For reconstitution add 50 µl of sterile water
<b>Storage</b>	Store lyophilized/reconstituted at -20°C; once reconstituted make aliquots to avoid repeated freeze-thaw cycles. Please remember to spin the tubes briefly prior to opening them to avoid any losses that might occur from material adhering to the cap or sides of the tube.

**Application information**

<b>Recommended dilution</b>	1 : 2000 (WB)
<b>Expected   apparent MW</b>	39 kDa
<b>Confirmed reactivity</b>	<i>Cyanobium</i> sp. PCC7001, <i>Synechococcus elongatus</i> sp. PCC7942, <i>Synechococcus</i> sp. PCC7002, <i>Synechocystis</i> sp. PCC6803
<b>Predicted reactivity</b>	Cyanobacteria Species of your interest not listed? <a href="#">Contact us</a>
<b>Not reactive in</b>	No confirmed exceptions from predicted reactivity are currently known
<b>Additional information</b>	SbtA from <i>Cyanobium</i> PCC7001 is expected to be smaller on SDS-PAGE.
<b>Selected references</b>	<a href="#">Artier et al. (2019)</a> . Synthetic DNA system for structure-function studies of the high affinity CO <sub>2</sub> uptake NDH-13 protein complex in cyanobacteria. <i>Biochim Biophys Acta Bioenerg.</i> 2018 Jun 28. pii: S0005-2728(18)30175-0. doi: 10.1016/j.bbabi.2018.06.015 <a href="#">Artier et al. (2018)</a> . Synthetic DNA system for structure-function studies of the high affinity CO <sub>2</sub> uptake NDH-13 protein complex in cyanobacteria. <i>Biochim Biophys Acta.</i> 2018 Jun 28. pii: S0005-2728(18)30175-0. doi: 10.1016/j.bbabi.2018.06.015. <a href="#">Gandini et al. (2017)</a> . The transporter SynPAM71 is located in the plasma membrane and thylakoids, and mediates manganese tolerance in <i>Synechocystis</i> PCC6803. <i>New Phytol.</i> 2017 Mar 20. doi: 10.1111/nph.14526. <a href="#">Holland et al. (2016)</a> . Impacts of genetically engineered alterations in carbon sink pathways on photosynthetic performance. <i>Algal Research</i> , 20 (2016) 87–99.

**Application example**

Negative control, SbtA deletion strain (1), *Synechococcus elongatus* PCC7942 (2,3), *Cyanobium* sp PCC7001 (4), *Synechococcus* sp PCC7002 (5), *Synechocystis* sp PCC6803 (6) extracted with were separated on 12 % SDS-PAGE and blotted 1h to PVDF. Blots were blocked with for 1h at room temperature (RT) with agitation. Blot was incubated in the primary antibody at a dilution of 1: 2 000 for 1h at RT with agitation. The antibody solution was decanted and the blot was rinsed briefly twice, then washed once for 15 min and 3 times for 5 min in TBS-T at RT with agitation. Blot was incubated in secondary antibody (anti-rabbit IgG horse radish peroxidase conjugated) diluted to 1:10 000 in for 1h at RT with agitation. The blot was washed as above and developed using ATTOPhos.



This product is **for research use only** (not for diagnostic or therapeutic use)

**contact: [support@agrisera.com](mailto:support@agrisera.com)**

---

Agrisera AB | Box 57 | SE-91121 Vännäs | Sweden | +46 (0)935 33 000 | [www.agrisera.com](http://www.agrisera.com)

Courtesy of Dr. Britta Forster, The Australian National University, Canberra, Australia