

Product no **AS20 4386****S protein of Novel Coronavirus SARS-CoV-2/ 2019-nCoV (human)****Product information**

Immunogen | Recombinant Human Novel Coronavirus Spike glycoprotein (S) (16-685aa), UniProt: [P0DTC2](#) Antigen sequence has highest homology to Spike protein S1.

Host | Mouse

Clonality | Monoclonal recombinant

Subclass/isotype | Mouse scFv fusion with human IgG1 Fc

Purity | Immunoglobulin purified on Protein A in 10 mM PBS, pH 7.4, 50 % glycerol, 0.03% Proclin 300.

Format | Liquid

Quantity | 100 µl

Storage | Store at -20°C or -80°C; once reconstituted make aliquots to avoid repeated freeze-thaw cycles. Please remember to spin the tubes briefly prior to opening them to avoid any losses that might occur from material adhering to the cap or sides of the tube.

Application information

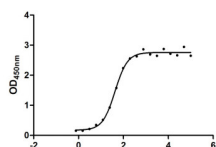
Recommended dilution | 1: 500 - 1: 40 000 (Colloidal Gold Immunochromatography), 1: 10 000 - 1: 50 000 (ELISA)

Expected | apparent MW | 141 kDa

Confirmed reactivity | Human Novel SARS-CoV-2/ 2019-nCoV S protein

Not reactive in | No confirmed exceptions from predicted reactivity are currently known

Additional information | Recombinant anti-SARS-CoV-2 spike Mouse ScFv is expressed in 293 cells (HEK293) with a human IgG1 Fc tag on C-terminal. Therefore, anti-human IgG1 Fc (gamma chain), secondary antibody has to be used: [AS20 4390](#)

Application example

Binding Activity of SARS-CoV-2-S Antibody measured by its binding ability in a functional ELISA. Wells were coated with Recombinant Human Novel Coronavirus Spike glycoprotein(S) ([AS20 4389](#)) at 2 µg/ml. EC₅₀ of SARS-CoV-2-S antibodies is 36.79 - 48.87 ng/ml.