

Product no **AS04 038****PsbB | CP47 protein of PSII****Product information**

Immunogen | KLH-conjugated synthetic peptide derived from available plant, algal and cyanobacterial PsbB sequences including *Arabidopsis thaliana* [AtCg00680](#), *Hordeum vulgare* [P10900](#), *Oryza sativa* [P0C364](#), *Synechocystis* PCC 6803 [P05429](#)

Host | Rabbit

Clonality | Polyclonal

Purity | Serum

Format | Lyophilized

Quantity | 50 µl

Reconstitution | For reconstitution add 50 µl of sterile water

Storage | Store lyophilized/reconstituted at -20°C; once reconstituted make aliquots to avoid repeated freeze-thaw cycles. Please remember to spin the tubes briefly prior to opening them to avoid any losses that might occur from material adhering to the cap or sides of the tube.

Additional information | This antibody can be used as a loading control for studies of PSII or photosynthetic acclimation in diatoms [Blommaert et al. 2017](#). *Limnol. Oceanogr.* DOI: 10.1002/lno.10511.

This product can be sold containing ProClin if requested.

Application information

Recommended dilution | 1: 10 000 (CN-PAGE), 1 : 2000 (WB)

Expected | apparent MW | 56 kDa

Confirmed reactivity | *Anabaena* 7120, *Arabidopsis thaliana*, *Chlamydomonas reinhardtii*, *Dionaea muscipula*, *Echinochloa crus-galli*, *Hordeum vulgare*, *Malus prunifolia*, *Mesostigma viride*, *Nicotiana benthamiana*, *Opephora guenter-grassii* (diatom), *Oryza sativa*, *Panicum miliaceum*, *Phaseolus vulgaris*, *Physcomitrium patens*, *Pisum sativum*, *Skeletonema costatum* (diatom), *Synechococcus* PCC7942, 6803, , *Seminavis robusta* (diatom), *Zea mays*

Predicted reactivity | *Abies concolor*, *Brachypodium distachyon*, *Brassica napus*, *Cannabis sativa*, Cyanobacteria, *Cucumis sativus*, *Ephedra* sp., *Glycine max*, *Lotus japonicus*, *Manihot esculenta*, *Nanochloropsis* sp., *Nicotiana tabacum*, *Panax ginseng*, *Populus trichocarpa*,
Species of your interest not listed? [Contact us](#)

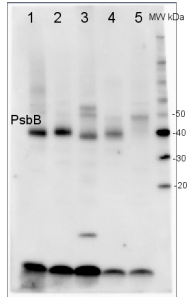
Not reactive in | No confirmed exceptions from predicted reactivity are currently known

Additional information | This product can be sold containing ProClin if requested

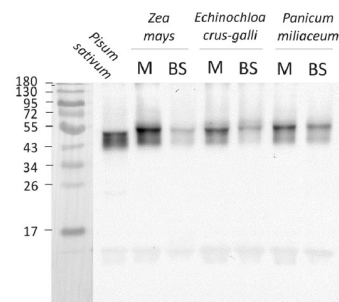
in bis-tris gel systems PsbB protein migrates between 40-45 kDa

Selected references | [Sulli et al. \(2023\)](#). Generation and physiological characterization of genome edited *Nicotiana benthamiana* plants containing zeaxanthin as the only leaf xanthophyll. *Planta* . 2023 Oct 5;258(5):93. doi: 10.1007/s00425-023-04248-3.
[Nagy et al. \(2023\)](#). Photoautotrophic and sustained H₂ production by the pgr5 mutant of *Chlamydomonas reinhardtii* in simulated daily light conditions. *International Journal of Hydrogen Energy* Volume 53, 31 January 2024, Pages 760-769.
[Vidal-Meireles, et al. \(2023\)](#)The lifetime of the oxygen-evolving complex subunit PSBO depends on light intensity and carbon availability in *Chlamydomonas*. *Plant Cell Environ.* 2023;46(2):422-439. doi:10.1111/pce.14483
[Miernicka et al. \(2022\)](#) The Adjustment Strategy of Venus Flytrap Photosynthetic Apparatus to UV-A Radiation. *Cells.* 2022;11(19):3030. Published 2022 Sep 27. doi:10.3390/cells11193032
[Konert et al \(2022\)](#). High-light-inducible proteins HliA and HliB: pigment binding and protein-protein interactions. *Photosynth Res.* 2022 Jun;152(3):317-332. doi: 10.1007/s11120-022-00904-z. Epub 2022 Feb 26. PMID: 35218444.
[Guardini et al. \(2022\)](#). Loss of a single chlorophyll in CP29 triggers re-organization of the Photosystem II supramolecular assembly. *Biochim Biophys Acta Bioenerg.* 2022 Jun 1;1863(5):148555. doi: 10.1016/j.bbabi.2022.148555. Epub 2022 Apr 2. PMID: 35378087.
[Xiong et al. \(2022\)](#) a chloroplast nucleoid protein of bacterial origin linking chloroplast transcriptional and translational machineries, is required for proper chloroplast gene expression in *Arabidopsis thaliana*. *Nucleic Acids Res.* 2022 Jun 23;50(12):6715-34. doi: 10.1093/nar/gkac501. Epub ahead of print. PMID: 35736138; PMCID: PMC9262611.

Application example



2 µg of total protein from *Arabidopsis thaliana* leaf (1), *Hordeum vulgare* (2), *Chlamydomonas reinhardtii* total cell (3) *Synechococcus* sp. 7942 total cell (4), *Anabaena* sp. total cell (5), were extracted with PEB ([AS08_300](#)) and separated on **4-12% NuPage** (Invitrogen) **LDS-PAGE** and blotted 1h to **PVDF**. Blots were blocked immediately following transfer in 2% blocking reagent in 20 mM Tris, 137 mM sodium chloride pH 7.6 with 0.1% (v/v) Tween-20 (TBS-T) for 1h at room temperature with agitation. Blots were incubated in the primary antibody at a dilution of 1: 50 000 for 1h at room temperature with agitation. The antibody solution was decanted and the blot was rinsed briefly twice, then washed once for 15 min and 3 times for 5 min in TBS-T at room temperature with agitation. Blots were incubated in secondary antibody (anti-rabbit IgG horse radish peroxidase conjugated, recommended secondary antibody [AS09_602](#)) diluted to 1:50 000 in 2% blocking solution for 1h at room temperature with agitation. The blots were washed as above and developed for 5 min with chemiluminescence detection reagent according to the manufacturers instructions. Images of the blots were obtained using a CCD imager (FluorSMax, Bio-Rad) and Quantity One software (Bio-Rad).



2.0 µg of chlorophyll from *Pisum sativum* chloroplasts and from *Zea mays*, *Echinochloa crus-galli*, *Panicum miliaceum* mesophyll and bundle sheath chloroplasts extracted with 0.4 M sorbitol, 50 mM Hepes NaOH, pH 7.8, 10 mM NaCl, 5 mM MgCl₂ and 2 mM EDTA. Samples were denatured with Laemmli buffer at 75 °C for 5 min and were separated on 12% SDS-PAGE and blotted 30 min to PVDF using wet transfer. Blot was blocked with 5% milk in TBS for 2h at room temperature (RT) with agitation. Blot was incubated in the primary antibody AS04_038 at a dilution of 1: 2000 overnight at 4 °C with agitation in 1% milk in TBS-T. The antibody solution was decanted and the blot was washed 4 times for 5 min in TBS-T at RT with agitation. Blot was incubated in secondary antibody (anti-rabbit IgG horse radish peroxidase conjugated, from Agrisera, [AS09_602](#)) diluted to 1:25 000 in 1% milk in TBS-T for 1h at RT with agitation. The blot was washed 5 times for 5 min in TBS-T and 2 times for 5 min in TBS, and developed for 1 min with 1.25 mM luminol, 0.198 mM coumaric acid and 0.009% H₂O₂ in 0.1 M Tris- HCl, pH 8.5. Exposure time in ChemiDoc System was 122 seconds.

Courtesy Dr. Wioleta Wasilewska-Dębowska, Warsaw University, Poland