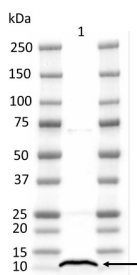


Product no **AS20 4368****PsaG | PSI-G subunit of photosystem I****Product information**

<b>Immunogen</b>	KLH-conjugated peptide derived from <i>Arabidopsis thaliana</i> PsaG, UniProt: <a href="#">Q9S7NZ</a> , TAIR: <a href="#">AT1G55670</a>
<b>Host</b>	Chicken
<b>Clonality</b>	Polyclonal
<b>Purity</b>	Immunogen affinity purified serum in PBS pH 7.4.
<b>Format</b>	Lyophilized
<b>Quantity</b>	50 µg
<b>Reconstitution</b>	For reconstitution add 50 µl, of sterile water
<b>Storage</b>	Store lyophilized/reconstituted at -20°C; once reconstituted make aliquots to avoid repeated freeze-thaw cycles. Please remember to spin the tubes briefly prior to opening them to avoid any losses that might occur from material adhering to the cap or sides of the tube.

**Application information**

<b>Recommended dilution</b>	1 : 1000 (WB)
<b>Expected   apparent MW</b>	17   11 kDa (after transit peptide is removed)
<b>Confirmed reactivity</b>	<i>Arabidopsis thaliana</i>
<b>Predicted reactivity</b>	<i>Medicago truncatula</i> , <i>Spinacia oleracea</i> , <i>Vitis vinifera</i> Species of your interest not listed? <a href="#">Contact us</a>
<b>Not reactive in</b>	No confirmed exceptions from predicted reactivity are currently known
<b>Selected references</b>	To be added when available, antibody released in November 2020.



4 µg/well of total chlorophyll from frozen thylakoids extracted freshly from *Arabidopsis thaliana* as described in [Bassi et al., 1985](#) were separated on 4-15 % SDS-PAGE and blotted 1h to PVDF semi-dry. Blot was blocked with 5% milk for 1h/RT with agitation. Blot was incubated in the primary antibody at a dilution of 1: 1 000 in TBS-T ON/4°C with agitation. The antibody solution was decanted and the blot was rinsed briefly twice, then washed once for 15 min and 3 times for 5 min in TBS-T at RT with agitation. Blot was incubated in Agrisera matching secondary antibody (anti-chicken IgG horse radish peroxidase conjugated [AS010 1489](#)) diluted to 1:5 000 in for 1h/RT with agitation. The blot was washed as above and developed for 1 min with [Agrisera ECLBright](#). Exposure time was 2 seconds.

Courtesy of Dr. Guillem Borràs I Gas, University of Copenhagen, Danmark