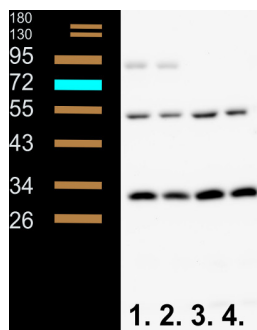


Product no **AS15 2863****Phly | DNA photolyase (At4g25290) (N-terminal part)****Product information**

<b>Immunogen</b>	KLH-conjugated peptide derived from <i>Arabidopsis thaliana</i> DNA photolyase, UniProt: <a href="#">F4JSJ6</a> , TAIR: <a href="#">AT4G25290</a> , located in the N-terminal part of the protein
<b>Host</b>	Rabbit
<b>Clonality</b>	Polyclonal
<b>Purity</b>	Immunogen affinity purified serum in PBS pH 7.4.
<b>Format</b>	Lyophilized
<b>Quantity</b>	50 µg
<b>Reconstitution</b>	For reconstitution add 50 µl of sterile water
<b>Storage</b>	Store lyophilized/reconstituted at -20°C; once reconstituted make aliquots to avoid repeated freeze-thaw cycles. Please remember to spin the tubes briefly prior to opening them to avoid any losses that might occur from material adhering to the cap or sides of the tube.

**Application information**

<b>Recommended dilution</b>	1 : 1000 (WB)
<b>Expected   apparent MW</b>	78   90 kDa
<b>Confirmed reactivity</b>	<i>Arabidopsis thaliana</i>
<b>Not reactive in</b>	No confirmed exceptions from predicted reactivity are currently known

**application example**

2,5 µg of total protein from *Arabidopsis thaliana* wild type darkness (1), wild type light (2) and insertion mutants: SALK\_056328C darkness (3), SALK\_056328C light (4), extracted with 0.1 M Tris-HCl pH 8.5, 4% SDS, 2% (v/v) 2-mercaptoethanol, 2 mM phenylmethylsulfonyl fluoride and denatured with Laemmli buffer at 95°C for 10 min were separated on 12% SDS-PAGE and blotted 2h to PVDF using semi-dry transfer. Blots were blocked with 5% milk PBS-T (Tween 0.5%) for 30 min. at room temperature (RT) with agitation. Blot was incubated in the primary antibody at a dilution of 1:1000 overnight at 4°C with agitation. The antibody solution was decanted and the blot was rinsed briefly twice, then washed 3 times for 10 min in 5% milk PBS-T at RT with agitation. Blot was incubated in secondary antibody (anti-rabbit IgG horse radish peroxidase conjugated, from Agrisera) diluted to 1:25 000 in 5% milk PBS-T for 1h at RT with agitation. The blot was rinsed briefly twice, then washed 3 times for 10 min in PBS-T at RT with agitation. Blot was developed for 5 min with chemiluminescent detection reagent. Exposure time was 5 minutes.

Courtesy of Dr. Justyna Łabuz, Department of Biochemistry, Biophysics and Biotechnology, Jagiellonian University, Poland