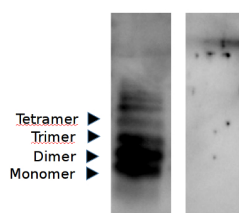


**Product no AS08 359****IAPP | Human IAPP (amylin) 1-37, specific for the native hormone having a disulphide-bridge between Cys2-Cys7****Product information**

<b>Immunogen</b>	Synthetic peptide corresponding to the human the 37 residue IAPP also known as amylin, The IAPP/amylin peptide contains a disulphide-bridge between Cys2-Cys7 Amino acid sequence: KCNTATCATQRLANFLVHSSNFGAILSSTNVGSNTY (disulphide link between Cys2-Cys7)
<b>Host</b>	Chicken
<b>Clonality</b>	Polyclonal
<b>Purity</b>	Purified, total IgY (chicken egg yolk immunoglobulin) in PBS pH 8. Contains 0.02 % sodium azide.
<b>Format</b>	Lyophilized
<b>Quantity</b>	50 µl
<b>Storage</b>	Store lyophilized/reconstituted at -20°C; once reconstituted make aliquots to avoid repeated freeze-thaw cycles. Please remember to spin the tubes briefly prior to opening them to avoid any losses that might occur from material adhering to the cap or sides of the tube.

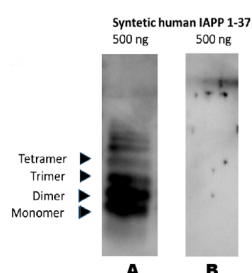
**Application information**

<b>Recommended dilution</b>	1:1000 (WB), 1:1000 (ELISA)
<b>Expected   apparent MW</b>	3,9 kDa
<b>Confirmed reactivity</b>	Human
<b>Predicted reactivity</b>	Primates, mouse, rat, dog, seal, Chinese hamster
<b>Not reactive in</b>	No confirmed exceptions from predicted reactivity are currently known
<b>Additional information</b>	Antibody is specific for the native hormone having a disulphide-bridge between Cys2-Cys7

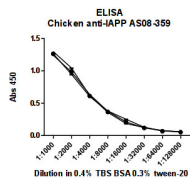


Western blot analysis illustrating specificity of AS08 359 for the oxidized form of IAPP (partly aggregated peptide illustrated below)

- Peptide separated on 16% SDS-tricine PAGE under denaturing conditions +/- -mercaptoethanol.
- Membrane: PVDF
- Transfer buffer, tris glycine, pH 9.5 containing 0.025% SDS
- Blocking buffer: 0.4% BSA in TBS, 0.3% Tween 20
- Antibody dilution : 1:1000
- Secondary antibody: anti-chicken (HRP)
- Detection: Enhanced Chemiluminescence 10 seconds



- A- no reducing agent  
B- reducing agent - 1 % betamercaptoethanol



## ELISA

- Nunc immunosorpt 96 well plate was coated with synthetic IAPP (amylin) 1-37, in PBS at peptide concentration corresponding to 2µg/ml.
- Blocking buffer: 0.4% BSA in TBS, 0.3% Tween 20
- Antibody dilution : 1:1000
- Washing solution TBS containing 0.3% tween-20
- Secondary antibody: anti-chicken (HRP)