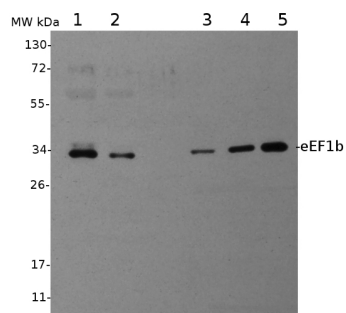


Product no **AS07 265****eEF1b | Elongation factor 1-beta****Product information**

<b>Immunogen</b>	Recombinant eEF1B-beta protein from <i>Arabidopsis thaliana</i> with no affinity tag, UniProt: <a href="#">Q9SI20</a> , TAIR: <a href="#">At2g18110</a>
<b>Host</b>	Rabbit
<b>Clonality</b>	Polyclonal
<b>Purity</b>	Serum
<b>Format</b>	Lyophilized
<b>Quantity</b>	200 µl
<b>Reconstitution</b>	For reconstitution add 200 µl of sterile water
<b>Storage</b>	Store lyophilized/reconstituted at -20°C; once reconstituted make aliquots to avoid repeated freeze-thaw cycles. Please remember to spin the tubes briefly prior to opening them to avoid any losses that might occur from material adhering to the cap or sides of the tube.

**Application information**

<b>Recommended dilution</b>	1 : 1000 (WB)
<b>Expected   apparent MW</b>	25   30 kDa
<b>Confirmed reactivity</b>	<i>Arabidopsis thaliana</i> , <i>Zea mays</i>
<b>Predicted reactivity</b>	<i>Brassica campestris</i> , <i>Hordeum vulgare</i> , <i>Nicotiana attenuata</i> , <i>Oryza sativa</i> <i>Pisum sativum</i> , <i>Ricinus communis</i> Species of your interest not listed? <a href="#">Contact us</a>
<b>Not reactive in</b>	No confirmed exceptions from predicted reactivity are currently known
<b>Selected references</b>	<a href="#">Lázaro-Mixteco</a> et al. (2012). The Absence of Heat Shock Protein HSP101 Affects the Proteome of Mature and Germinating Maize Embryos. <i>J. Proteome Res.</i> May 11, ahead of print.

**Application example**

**10 µg of total cell extract** from *Arabidopsis thaliana* (1), 5 µg of total cell extract from *Arabidopsis thaliana* (2), 2 ng of recombinant eEF1b (3), 4 ng of recombinant eEF1b (4), 8 ng of recombinant eEF1b (5) were separated on **15% SDS-PAGE** and blotted 1h to **nitrocellulose** (Biorad). Blots were incubated in the primary antibody at a dilution of 1: 1000 for 1h at room temperature with agitation and secondary HRP-conjugated antibody (1: 10 000).