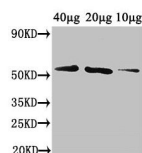


Product no **AS19 4345****DEGP12 | Putative protease Do-like 12 (mitochondrial)****Product information**

| | |
|-------------------------------|--|
| Immunogen | Recombinant Putative protease Do-like 12 derived from the sequence of <i>Arabidopsis thaliana</i> , amino acids 25-499, UniProt: Q9LK70 TAIR: AT3G16550 |
| Host | Rabbit |
| Clonality | Polyclonal |
| Purity | Total IgG. Protein G purified. |
| Format | Liquid |
| Quantity | 50 µg |
| Storage | Store at -20°C or -80°C, avoid repeated freeze-thaw cycles. Make aliquots to avoid repeated freeze-thaw cycles. Please remember to spin the tubes briefly prior to opening them to avoid any losses that might occur from material adhering to the cap or sides of the tube. |
| Additional information | Preservative: 0.03% Proclin 300. Preparation contains: 50% Glycerol, 10 mM PBS, pH 7.4 Reactivit of this antibody on endogenous material remains to be determined. |

Application information

| | |
|-------------------------------|---|
| Recommended dilution | 1 : 1000 - 1: 2000 (WB) |
| Expected apparent MW | 54 kDa |
| Confirmed reactivity | <i>Arabidopsis thaliana</i> |
| Not reactive in | No confirmed exceptions from predicted reactivity are currently known |

application example

40, 20 and 10 µg of recombinant *Arabidopsis thaliana* DEG12 were separated on 8 % SDS-PAGE and blotted 1h to PVDF using semi-dry transfer. Blot was blocked with 5 % milk for 2h/RT with agitation. Blot was incubated in the primary antibody at a dilution of 3.4 µg/ml in PBS-T 1h/RT with agitation. The antibody solution was decanted and the blot was rinsed briefly twice, then washed 4 times for 10 min. in PBS-T at RT with agitation. Blot was incubated in the matching secondary antibody (anti-rabbit IgG horse radish peroxidase conjugated) diluted to 1:50 000 in for 1h/RT with agitation. The blot was washed as above and developed with chemiluminescent detection reagent, following manufacture's instructions.