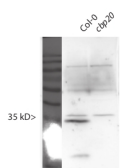


Product no **AS09 530****CBP20 | nuclear cap-binding protein subunit 2****Product information**

Immunogen	KLH-conjugated peptide, derived with <i>Arabidopsis thaliana</i> CBP20 protein Q9xFD1 , At5g44200
Host	Rabbit
Clonality	Polyclonal
Purity	Immunogen affinity purified serum in PBS pH 7.4.
Format	Lyophilized
Quantity	200 µg
Reconstitution	For reconstitution add 200 µl of sterile water
Storage	Store lyophilized/reconstituted at -20°C; once reconstituted make aliquots to avoid repeated freeze-thaw cycles. Please remember to spin the tubes briefly prior to opening them to avoid any losses that might occur from material adhering to the cap or sides of the tube.

Application information

Recommended dilution	1 : 1000 (WB)
Expected apparent MW	29,6 30 kDa
Confirmed reactivity	<i>Arabidopsis thaliana</i>
Predicted reactivity	<i>Glycine max</i> , <i>Hordeum vulgare</i> , <i>Lotus corniculatus</i> , <i>Nicotiana tabacum</i> , <i>Oryza sativa</i> , <i>Ricinus communis</i> , <i>Solanum lycopersicum</i> , <i>Solanum tuberosum</i> , <i>Zea mays</i> Species of your interest not listed? Contact us
Not reactive in	No confirmed exceptions from predicted reactivity are currently known
Selected references	Raczynska et al. (2013). TheSERRATEprotein isinvolved inalternativesplicing inArabidopsis thaliana. Nucleic Acids Res. Oct 16.

Application example

25 µg of total protein extracts from 10 days old seedlings of *Arabidopsis thaliana* (wild type and a CBP20 mutant) were separated on **12.5 % SDS-PAGE** and blotted 1h to **PVDF (tank blotting)**. Blots were blocked with Roti-block over night at 4°C agitation. Blot was incubated in the primary antibody at a dilution of 1 : 1 000 for 1h at RT with agitation. The antibody solution was decanted and the blot was rinsed briefly twice, then washed once for 15 min and 3 times for 5 min in TBS-T at RT with agitation. Blot was incubated in secondary antibody (anti-rabbit IgG horse radish peroxidase conjugated, from Agrisera [AS09 602](#)) diluted to 1:10 000 in for 1h at RT with agitation. The blot was washed as above and developed for 5 min with ECL according to the manufacturers instructions. Exposure time was 30 min.

Courtesy of Dr. Sascha Laubinger, ZMBP, Germany