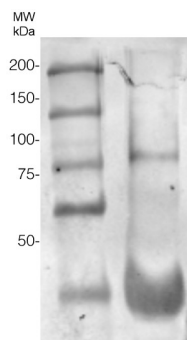


Product no **AS10 672****AGO6 | Argonaute 6****Product information**

Immunogen	KLH-conjugated peptide derived from <i>Arabidopsis thaliana</i> AGO6 UniProt: Q48771 TAIR: At2g32940
Host	Rabbit
Clonality	Polyclonal
Purity	Immunogen affinity purified serum in PBS pH 7.4.
Format	Lyophilized
Quantity	50 µg
Reconstitution	For reconstitution add 50 µl of sterile water
Storage	Store lyophilized/reconstituted at -20°C; once reconstituted make aliquots to avoid repeated freeze-thaw cycles. Please remember to spin the tubes briefly prior to opening them to avoid any losses that might occur from material adhering to the cap or sides of the tube.
Additional information	There can be a reaction with NEB broad range prestained protein ladder depending upon secondary antibody used. AGO6 accumulates to lower levels in the <i>nprp1a</i> mutant (Havecker et al. 2010). In addition, a non-specific band migrates to a similar location and thus protein was run on a 6% denaturing gel to obtain good separation. If other secondary antibody is used than in the figure below, cross-reacting pattern can be different.

Application information

Recommended dilution	1 : 1000 (WB)
Expected apparent MW	116,4 99 kDa
Confirmed reactivity	<i>Arabidopsis thaliana</i>
Predicted reactivity	<i>Arabidopsis thaliana</i>
Not reactive in	<i>Zea mays</i>
Additional information	AGO6 expression is cell specific, Seedlings can be used as a negative control
Selected references	Oliver & Martinez. (2021) Accumulation dynamics of ARGONAUTE proteins during meiosis in Arabidopsis. Plant Reprod. 2021 Nov 23. doi: 10.1007/s00497-021-00434-z. Epub ahead of print. PMID: 34812935. Sprunck et al. (2019). Elucidating small RNA pathways in Arabidopsis thaliana egg cells. http://dx.doi.org/10.1101/525956 Havecker et al. (2010). The RNA-directed DNA methylation Arabidopsis Argonautes functionally diverge based on expression and interaction with target loci. Plant Cell. 2010 Feb;22(2):321-34. doi: 10.1105/tpc.109.072199.

Application example

360 µg/well of *Arabidopsis thaliana* protein extracted from leaf using TCA-protein precipitation (for method check protocol tab) and saturated in 8M urea were separated on 15% SDS-PAGE and blotted for 1 hour to 0.2 µm nitrocellulose at 100V using wet transfer system. Blots were blocked with 0.5% cold fish gelatin for 1hr at room temp with agitation. Blot was incubated in the primary antibody (anti-H3) at a dilution of 1:2500 for an hour at RT with agitation. The blots were washed with 3X 15min TBS-TT at RT with agitation. Blots as incubated in the secondary antibody (goat anti-rabbit DyLight® 800 conjugated, [AS12 2460](#), Agrisera) 1:5000 dilution for 30min at RT with agitation and washed 1X with TBSTT for 15min,



This product is **for research use only** (not for diagnostic or therapeutic use)

contact: support@agrisera.com

Agrisera AB | Box 57 | SE-91121 Vännäs | Sweden | +46 (0)935 33 000 | www.agrisera.com

1X with TBST for 15min before scanning with the ODyssey IRD scanner.

Courtesy of Dr. Betty Chung and Pawel Baster, University of Cambridge, United Kingdom